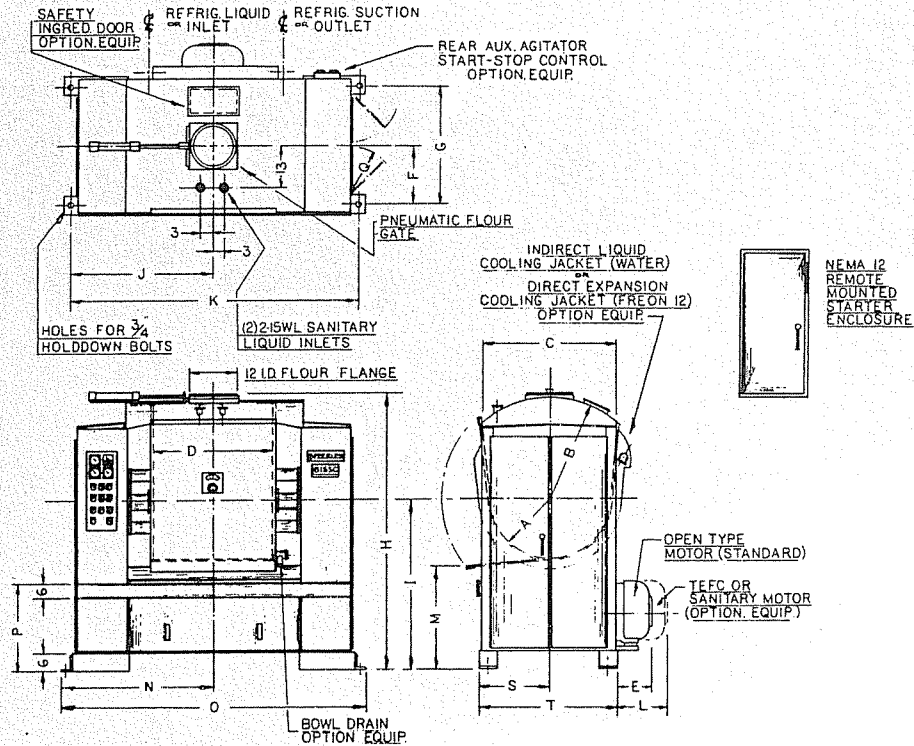




Peerless Machinery Corporation
 Vandemark Road
 Sidney, Ohio 45365
 Telephone 513 492 4158
 Telex 28 8047

Peerless

High-Speed Mixers



DIMENSIONS

MODEL	A	B	C	D	E	F	G	H	I	J	K	L	M	N	O	P	Q	S	T
111	13½	23½	31	24	8½	13½	27	76	49½	37	74	8	34	39	78	28½	11	16½	33
222	13½	23½	31	32	8½	13½	27	76	49½	39	78	10	34	41	82	28½	11	16½	33
333	16	27½	36	32	8½	16	32	79	49½	39	78	17	31½	41	82	28½	13½	19	38
444	18	32	42	36	18	19	38	88	53½	45	90	26	35	47	94	28½	16½	22	44
555	18	32	42	42	19	19	38	88	53½	48	96	27	35	50	100	28½	16½	22	44
666	18	32	42	48	20	19	38	88	53½	51	102	28	35	53	106	28½	16½	22	44
1300	20	35	48	50	26	22	44	96	58	56	112	32	37	58	116	30	19½	25	50
1600	20	35	48	56	27	22	44	96	58	59	118	33	37	61	122	30	19½	25	50
2000	22	39	52	56	28	24	48	102	60	64	128	34	37	66	132	30	21½	27	54
2400	24	39	52	56	32	24	48	102	60	64	128	38	37	66	132	30	21½	27	54

SPECIFICATIONS

MODEL	Mixing Capacity* (Pounds)	Base Bowl Volume (ASBE)	Total Bowl Volume	Drive Motor H.P.	Drive Motor K.W. Load	Dump Motor H.P.	Approx. Floor Load Lbs./Sq. Ft.	Net Weight	Approx. Shipping Weight
111	270	8.9 Cu. Ft.	10.9 Cu. Ft.	10/5	7.5	¾	4,000	4,000	4,350
222	360	11.9 Cu. Ft.	14.54 Cu. Ft.	15/7½	11.25	¾	5,000	5,000	5,400
333	540	16.4 Cu. Ft.	20.53 Cu. Ft.	25/12.5	18.75	¾	3,300	7,080	7,500
444	720	23.4 Cu. Ft.	29.98 Cu. Ft.	30/15	22.5	½	3,870	10,550	11,050
555	900	27.4 Cu. Ft.	34.99 Cu. Ft.	40/20	30.0	½	4,020	11,000	11,525
666	1,080	31.4 Cu. Ft.	39.99 Cu. Ft.	50/25	37.5	½	4,175	11,650	12,200
1300	1,300	39.2 Cu. Ft.	49.34 Cu. Ft.	60/30	45.0	1	5,410	15,730	16,300
1600	1,600	44.0 Cu. Ft.	56.68 Cu. Ft.	75/37.5	56.25	1	5,620	16,400	17,000
2000	2,000	54.0 Cu. Ft.	69.85 Cu. Ft.	100/50	75.0	1	5,325	19,750	20,500
2400	2,400	64.4 Cu. Ft.	78.31 Cu. Ft.	125/62.5	93.75	1	7,900	21,725	22,750

*at 65% absorption

40-66-2 80-00

AGITATOR SPEEDS

- 45 RPM low/90 RPM high
- 40 RPM low/80 RPM high
- 35 RPM low/70 RPM high
- Special custom speeds

The rated capacity of this mixer is for standard white bread doughs of 65% absorption or higher. When mixing special doughs or lower absorption doughs, maximum capacities should not load the drive motor to exceed KW rating. Beyond these limits heavy duty drive is required.

Due to the continuous effort of Peerless Engineering to improve performance, dimensional data and specifications are subject to change without notice.